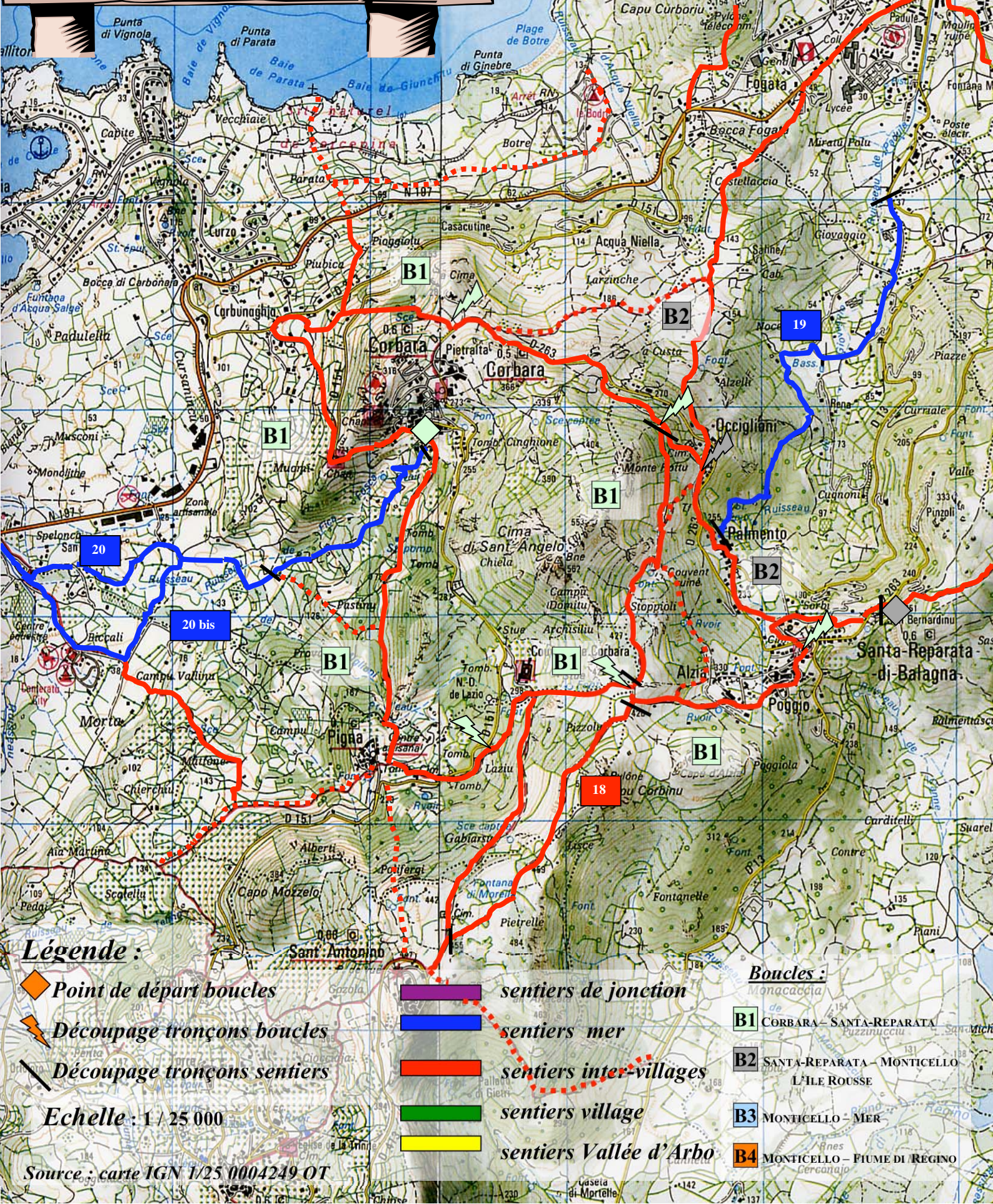


ITINÉRAIRES DE PROMÈNE

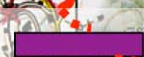
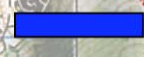
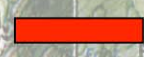
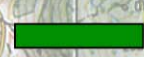
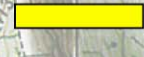
ET DE RANDONNÉE

DU BASSIN DE VIE DE L'ÎLE ROUSSE



Légende :

-  Point de départ boucles
-  Découpage tronçons boucles
-  Découpage tronçons sentiers

-  sentiers de jonction
-  sentiers mer
-  sentiers inter-villages
-  sentiers village
-  sentiers Vallée d'Arbo

- #### Boucles :
-  B1 CORBARA – SANTA-REPARATA di Balagna
 -  B2 SANTA-REPARATA – MONTICELLO L'ÎLE ROUSSE
 -  B3 MONTICELLO – MER
 -  B4 MONTICELLO – FIUME DI REGINO

Echelle : 1 / 25 000

Source : carte IGN 1/25 0004249 OT